



## SABA 250

**\$727,000**

**Lot 1305 Harriott Estate  
Armstrong Creek**

4  2  2 

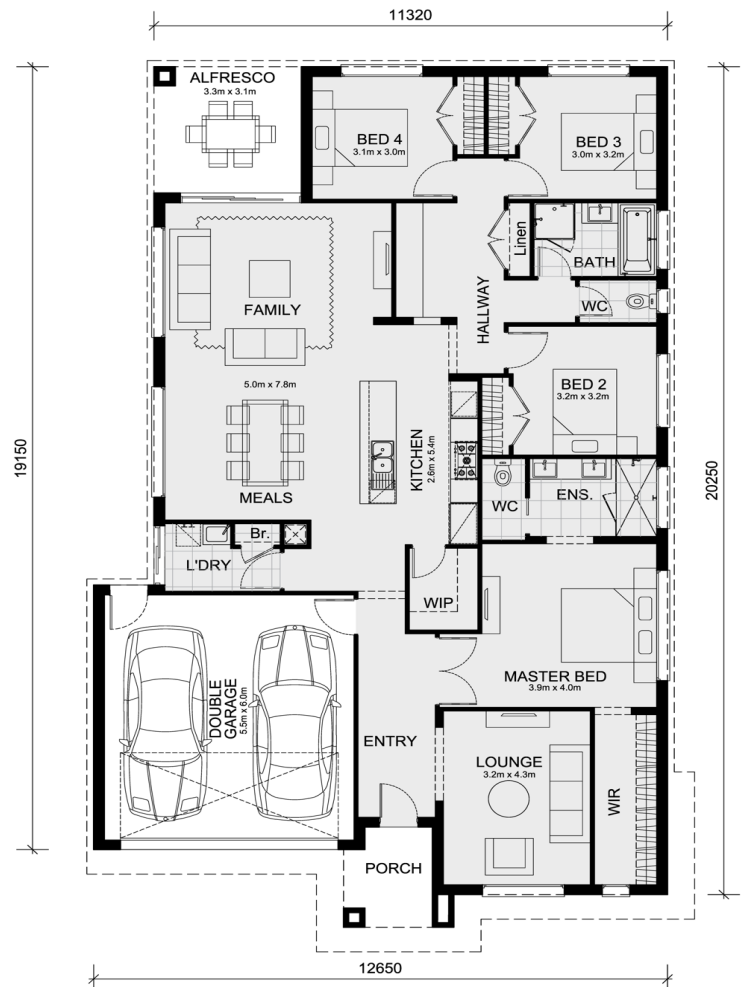
### Mimosa Homes Proudly Presents

The Saba 250 House and Land Package!

\* NCC Compliant Floorplan

\* Mimosa Homes Added Value Inclusions:

- Inclusive of site costs & connections with H1 class slab as per standard inclusions!
- Quality floor coverings throughout entire home!
- Higher ceilings 2550mm to ground floor!
- Double Glazed Awning windows
- Downlights to living areas!
- Vitrified Compact Surface benchtop to kitchen!
- 900mm S/S upright oven and cook top with S/S canopy rangehood!
- Stainless steel Dishwasher and Microwave with trim kit!
- Overhead cupboards & wine rack! (Design



#### Area Details

Land Size 392sqm Building Size 235sqm

Contact: **Nirav Patel**  
nirav@mimosahomes.com.au

0468463103  
www.mimosahomes.com.au