



Price based on standard floorplan and façade. Image depicts upgrade items not included in price.

# \$852,868

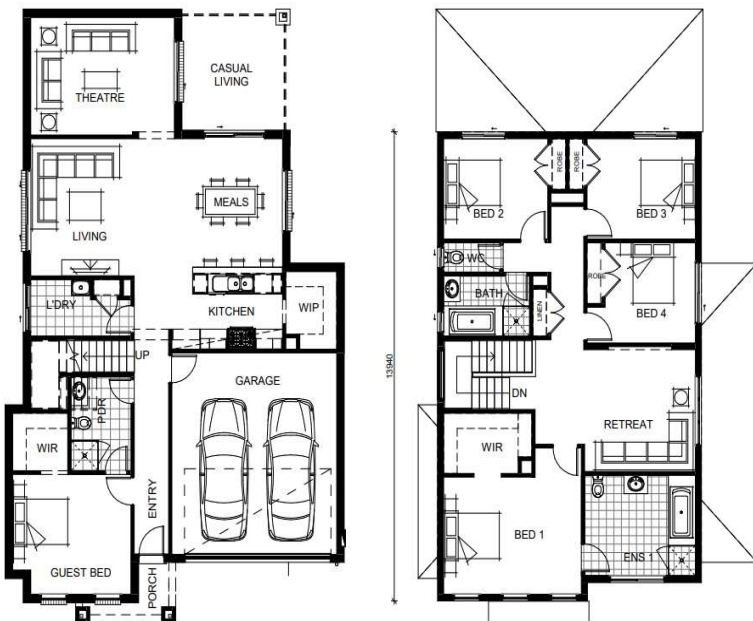


**Package Price: \$852,868**

**Lot Number: 1244**

**Lot Size: 350m2**

**House : PARIS 320 – Altitude Range**



At a glance:



**Inclusions List:**

- Site Cost Allowance included
- Floor Coverings Throughout
- 900mm Stainless Steel Appliances
- 20mm Stone to Kitchen, Bathroom & Ensuite
- Ducted Heating
- Bonus Evaporative Cooling
- Concrete Paving Driveway
- 2590mm Ceiling Heights to ground floor
- 2440mm Ceiling Heights to first floor
- 7 Star Energy