

SCHEDULE 1

HARRIOTT @ ARMSTRONG CREEK STAGE 12 BUILDING ENVELOPES

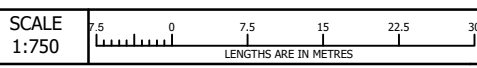


S - SMALL LOT HOUSING CODE - TYPE A

- Garages are to be set back a minimum of 5 metres from the primary frontage of the allotment and 0.50 metres behind the front of the dwelling
- Balconies, verandas, open porches, covered walkways and porticos that have a maximum height less than 4.50 metres above the ground level may encroach into the front setback by 1.50 metres.
- Facade treatments and /or covered balconies or verandas on the second storey of a building that have a maximum height of less than 6.60 metres above ground level may encroach into the front setback by 1.50 metres.
- Porches, verandas, eaves, fascia, gutters and screens may encroach into the side and rear setback by 0.50 metres
- Domestic fuel tanks and water tanks may encroach into the side and rear setback by 0.50 metres
- Heating and cooling equipment and other services may encroach into the side and rear setback by 0.50 metres



MC MULLEN NOLAN GROUP
31/574 Plummer Street,
Port Melbourne, VIC, 3207
Tel: (03) 7002 2200
Fax: (03) 7002 2299
www.mngsurvey.com.au
MNG Ref : 80004be-081b



ORIGINAL SHEET SIZE: A4 SHEET 1 OF 8

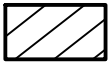
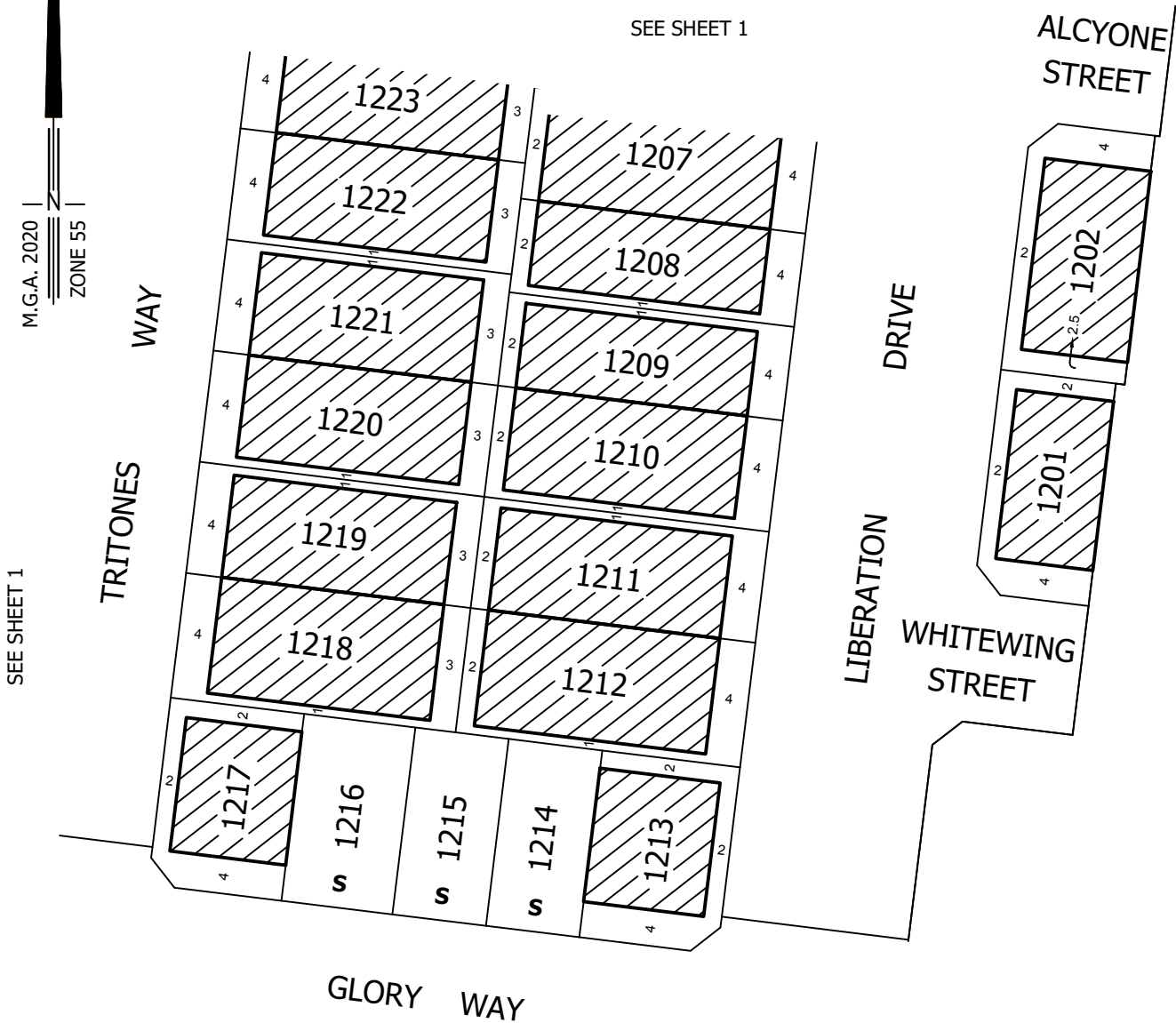
VERSION B



SCHEDULE 1

HARRIOTT @ ARMSTRONG CREEK STAGE 12 BUILDING ENVELOPES

SEE SHEET 1



- BUILDING ENVELOPE

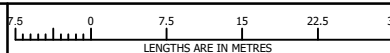
S - SMALL LOT HOUSING CODE - TYPE A

- Garages are to be set back a minimum of 5 metres from the primary frontage of the allotment and 0.50 metres behind the front of the dwelling
- Balconies, verandas, open porches, covered walkways and porticos that have a maximum height less than 4.50 metres above the ground level may encroach into the front setback by 1.50 metres.
- Facade treatments and /or covered balconies or verandas on the second storey of a building that have a maximum height of less than 6.60 metres above ground level may encroach into the front setback by 1.50 metres.
- Porches, verandas, eaves, fascia, gutters and screens may encroach into the side and rear setback by 0.50 metres
- Domestic fuel tanks and water tanks may encroach into the side and rear setback by 0.50 metres
- Heating and cooling equipment and other services may encroach into the side and rear setback by 0.50 metres



MC MULLEN NOLAN GROUP
31/574 Plummer Street,
Port Melbourne, VIC, 3207
Tel: (03) 7002 2200
Fax: (03) 7002 2299
www.mngsurvey.com.au
MNG Ref : 80004be-081b

SCALE
1:750



ORIGINAL SHEET
SIZE: A4

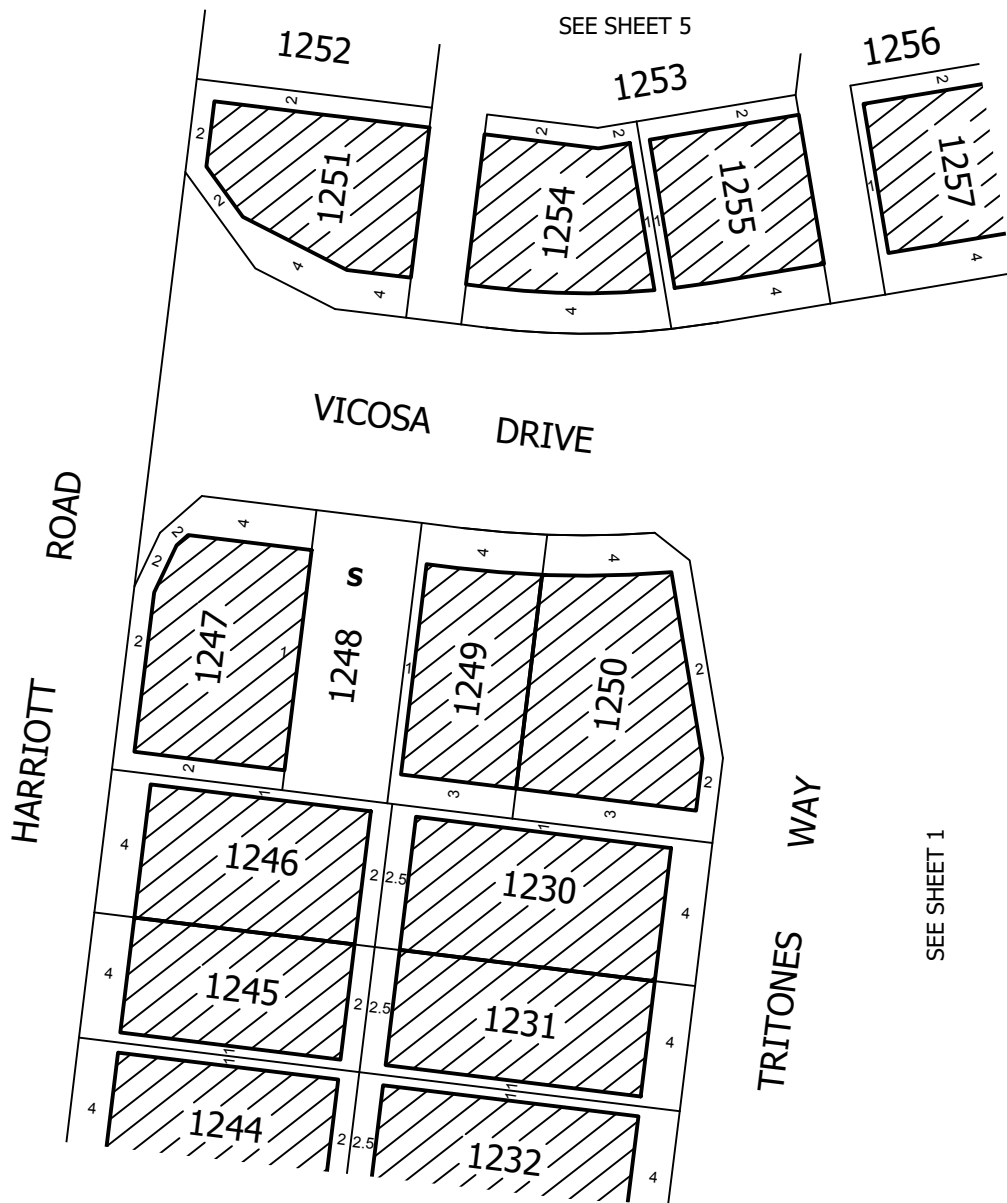
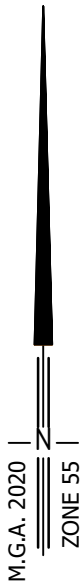
SHEET 2

VERSION B

HARRIOTT
AT ARMSTRONG CREEK

SCHEDULE 1

HARRIOTT @ ARMSTRONG CREEK STAGE 12 BUILDING ENVELOPES



SEE SHEET 5

SEE SHEET 1

SEE SHEET 4



- BUILDING ENVELOPE

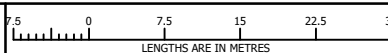
S - SMALL LOT HOUSING CODE - TYPE A

- Garages are to be set back a minimum of 5 metres from the primary frontage of the allotment and 0.50 metres behind the front of the dwelling
- Balconies, verandas, open porches, covered walkways and porticos that have a maximum height less than 4.50 metres above the ground level may encroach into the front setback by 1.50 metres.
- Facade treatments and /or covered balconies or verandas on the second storey of a building that have a maximum height of less than 6.60 metres above ground level may encroach into the front setback by 1.50 metres.
- Porches, verandas, eaves, fascia, gutters and screens may encroach into the side and rear setback by 0.50 metres
- Domestic fuel tanks and water tanks may encroach into the side and rear setback by 0.50 metres
- Heating and cooling equipment and other services may encroach into the side and rear setback by 0.50 metres



MC MULLEN NOLAN GROUP
31/574 Plummer Street,
Port Melbourne, VIC, 3207
Tel: (03) 7002 2200
Fax: (03) 7002 2299
www.mngsurvey.com.au
MNG Ref : 80004be-081b

SCALE
1:750



ORIGINAL SHEET
SIZE: A4

SHEET 3

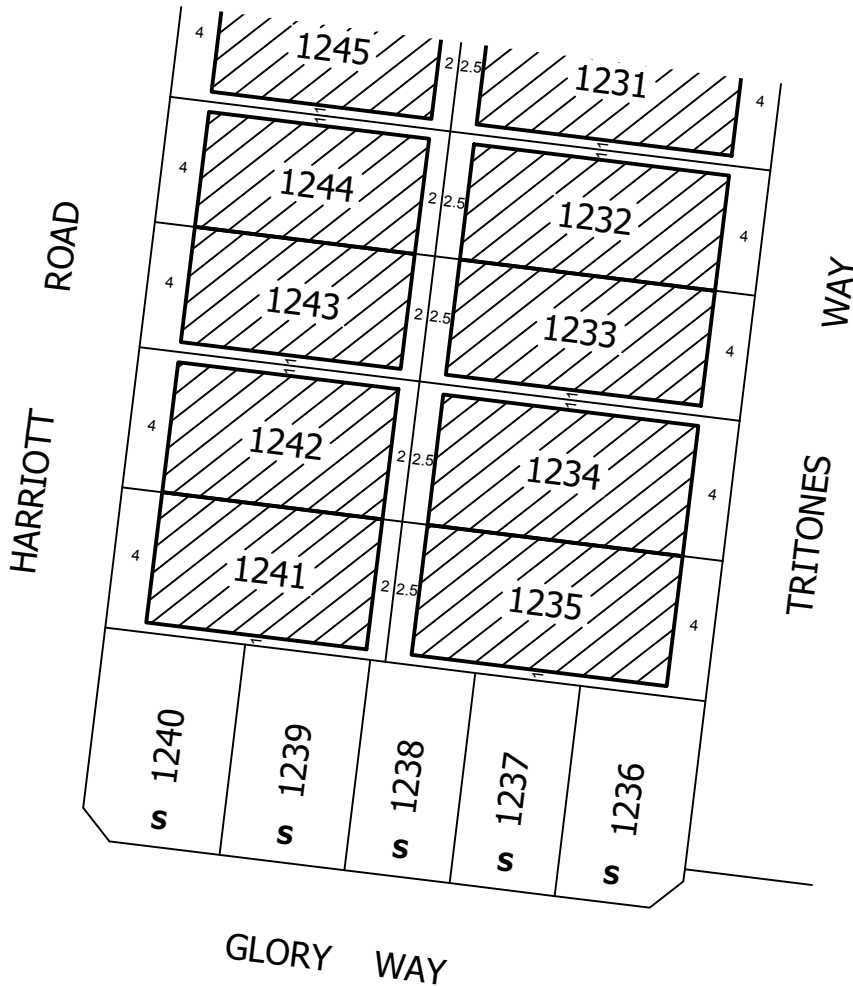
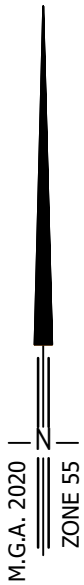
VERSION B



SCHEDULE 1

HARRIOTT @ ARMSTRONG CREEK STAGE 12 BUILDING ENVELOPES

SEE SHEET 3



SEE SHEET 2



- BUILDING ENVELOPE

S

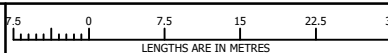
- SMALL LOT HOUSING CODE - TYPE A

- Garages are to be set back a minimum of 5 metres from the primary frontage of the allotment and 0.50 metres behind the front of the dwelling
- Balconies, verandas, open porches, covered walkways and porticos that have a maximum height less than 4.50 metres above the ground level may encroach into the front setback by 1.50 metres.
- Facade treatments and /or covered balconies or verandas on the second storey of a building that have a maximum height of less than 6.60 metres above ground level may encroach into the front setback by 1.50 metres.
- Porches, verandas, eaves, fascia, gutters and screens may encroach into the side and rear setback by 0.50 metres
- Domestic fuel tanks and water tanks may encroach into the side and rear setback by 0.50 metres
- Heating and cooling equipment and other services may encroach into the side and rear setback by 0.50 metres



MC MULLEN NOLAN GROUP
31/574 Plummer Street,
Port Melbourne, VIC, 3207
Tel: (03) 7002 2200
Fax: (03) 7002 2299
www.mngsurvey.com.au
MNG Ref : 80004be-081b

SCALE
1:750



ORIGINAL SHEET
SIZE: A4

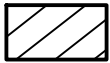
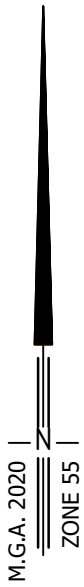
SHEET 4

VERSION B

HARRIOTT
AT ARMSTRONG CREEK

SCHEDULE 1

HARRIOTT @ ARMSTRONG CREEK STAGE 12 BUILDING ENVELOPES



- BUILDING ENVELOPE

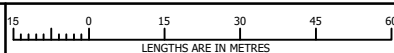
S - SMALL LOT HOUSING CODE - TYPE A

- Garages are to be set back a minimum of 5 metres from the primary frontage of the allotment and 0.50 metres behind the front of the dwelling
- Balconies, verandas, open porches, covered walkways and porticos that have a maximum height less than 4.50 metres above the ground level may encroach into the front setback by 1.50 metres.
- Facade treatments and /or covered balconies or verandas on the second storey of a building that have a maximum height of less than 6.60 metres above ground level may encroach into the front setback by 1.50 metres.
- Porches, verandas, eaves, fascia, gutters and screens may encroach into the side and rear setback by 0.50 metres
- Domestic fuel tanks and water tanks may encroach into the side and rear setback by 0.50 metres
- Heating and cooling equipment and other services may encroach into the side and rear setback by 0.50 metres



MC MULLEN NOLAN GROUP
31/574 Plummer Street,
Port Melbourne, VIC, 3207
Tel: (03) 7002 2200
Fax: (03) 7002 2299
www.mngsurvey.com.au
MNG Ref : 80004be-081b

SCALE
1:1500



ORIGINAL SHEET
SIZE: A4

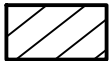
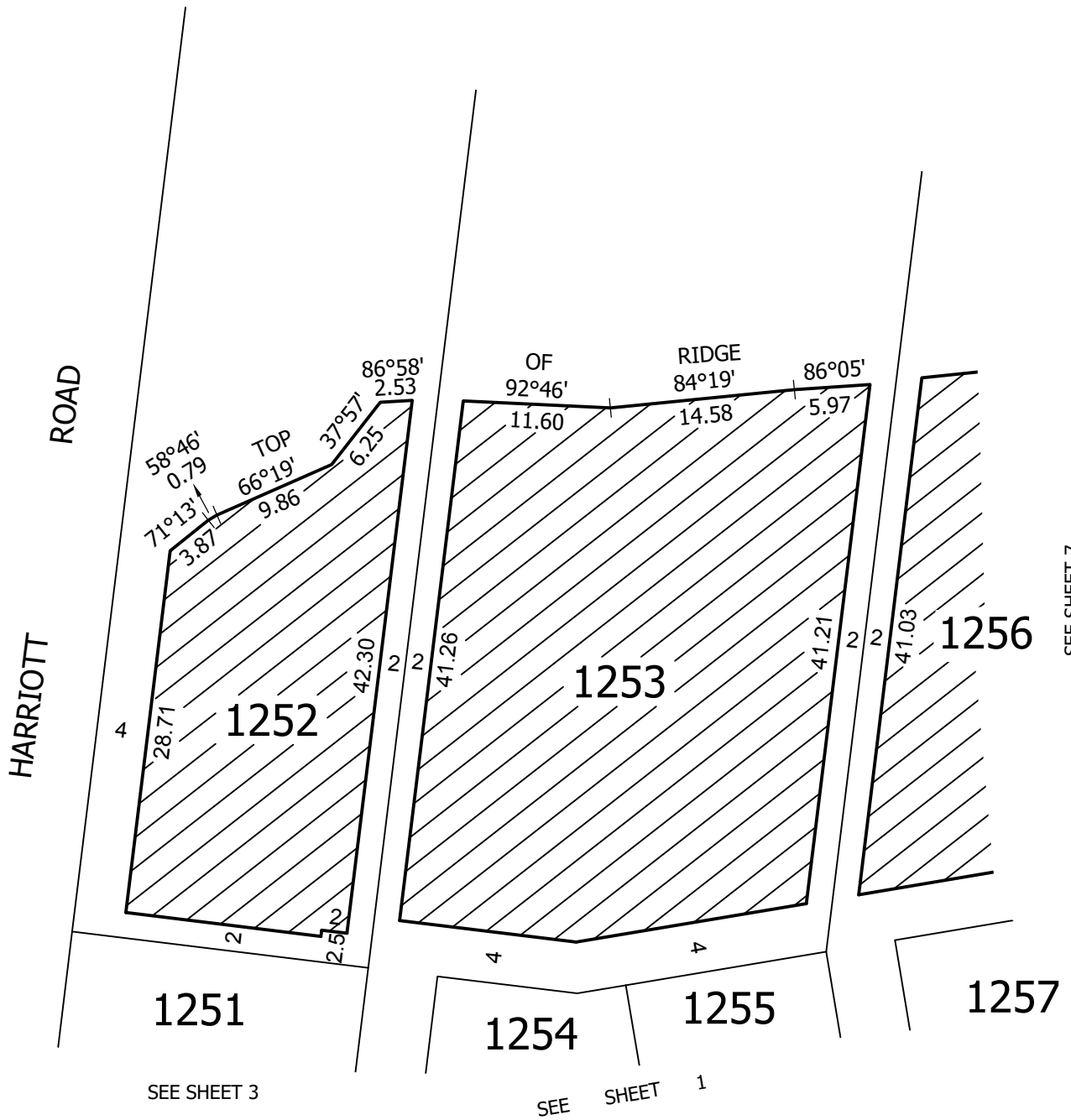
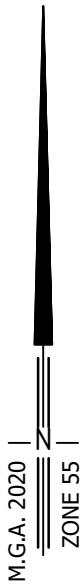
SHEET 5

VERSION B



SCHEDULE 1

HARRIOTT @ ARMSTRONG CREEK STAGE 12 BUILDING ENVELOPES



- BUILDING ENVELOPE

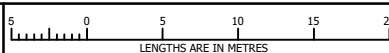
S - SMALL LOT HOUSING CODE - TYPE A

- Garages are to be set back a minimum of 5 metres from the primary frontage of the allotment and 0.50 metres behind the front of the dwelling
- Balconies, verandas, open porches, covered walkways and porticos that have a maximum height less than 4.50 metres above the ground level may encroach into the front setback by 1.50 metres.
- Facade treatments and /or covered balconies or verandas on the second storey of a building that have a maximum height of less than 6.60 metres above ground level may encroach into the front setback by 1.50 metres.
- Porches, verandas, eaves, fascia, gutters and screens may encroach into the side and rear setback by 0.50 metres
- Domestic fuel tanks and water tanks may encroach into the side and rear setback by 0.50 metres
- Heating and cooling equipment and other services may encroach into the side and rear setback by 0.50 metres



MC MULLEN NOLAN GROUP
31/574 Plummer Street,
Port Melbourne, VIC, 3207
Tel: (03) 7002 2200
Fax: (03) 7002 2299
www.mngsurvey.com.au
MNG Ref : 80004be-081b

SCALE
1:500



ORIGINAL SHEET
SIZE: A4

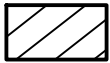
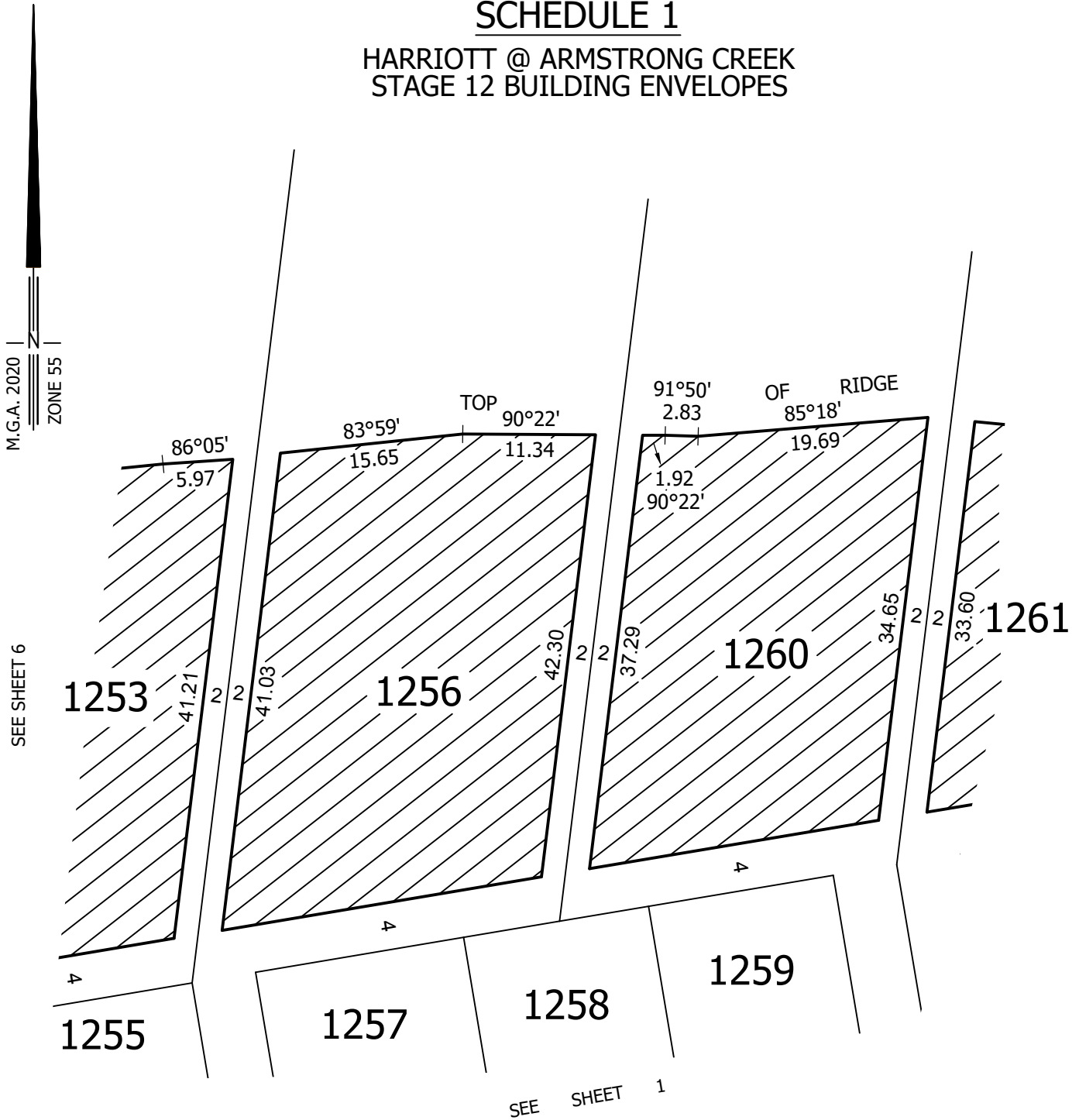
SHEET 6

VERSION B



SCHEDULE 1

HARRIOTT @ ARMSTRONG CREEK STAGE 12 BUILDING ENVELOPES



- BUILDING ENVELOPE

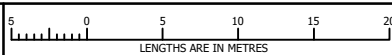
S - SMALL LOT HOUSING CODE - TYPE A

- Garages are to be set back a minimum of 5 metres from the primary frontage of the allotment and 0.50 metres behind the front of the dwelling
- Balconies, verandas, open porches, covered walkways and porticos that have a maximum height less than 4.50 metres above the ground level may encroach into the front setback by 1.50 metres.
- Facade treatments and /or covered balconies or verandas on the second storey of a building that have a maximum height of less than 6.60 metres above ground level may encroach into the front setback by 1.50 metres.
- Porches, verandas, eaves, fascia, gutters and screens may encroach into the side and rear setback by 0.50 metres
- Domestic fuel tanks and water tanks may encroach into the side and rear setback by 0.50 metres
- Heating and cooling equipment and other services may encroach into the side and rear setback by 0.50 metres



MC MULLEN NOLAN GROUP
31/574 Plummer Street,
Port Melbourne, VIC, 3207
Tel: (03) 7002 2200
Fax: (03) 7002 2299
www.mngsurvey.com.au
MNG Ref : 80004be-081b

SCALE
1:500



ORIGINAL SHEET
SIZE: A4

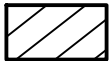
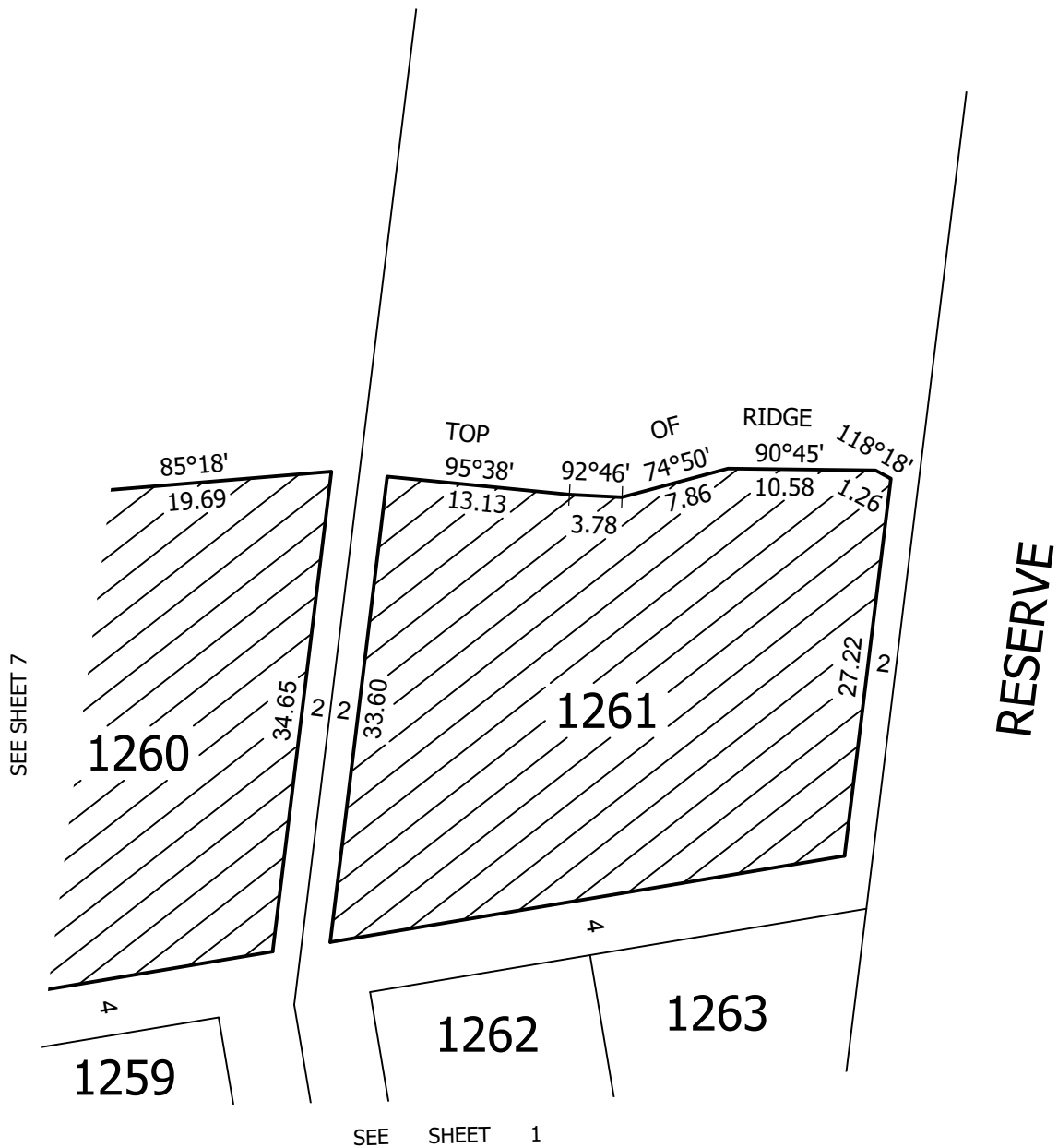
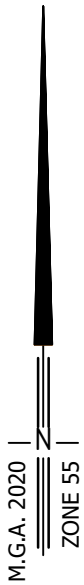
SHEET 7

VERSION B

HARRIOTT
AT ARMSTRONG CREEK

SCHEDULE 1

HARRIOTT @ ARMSTRONG CREEK STAGE 12 BUILDING ENVELOPES



- BUILDING ENVELOPE

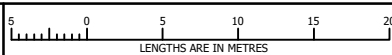
S - SMALL LOT HOUSING CODE - TYPE A

- Garages are to be set back a minimum of 5 metres from the primary frontage of the allotment and 0.50 metres behind the front of the dwelling
- Balconies, verandas, open porches, covered walkways and porticos that have a maximum height less than 4.50 metres above the ground level may encroach into the front setback by 1.50 metres.
- Facade treatments and /or covered balconies or verandas on the second storey of a building that have a maximum height of less than 6.60 metres above ground level may encroach into the front setback by 1.50 metres.
- Porches, verandas, eaves, fascia, gutters and screens may encroach into the side and rear setback by 0.50 metres
- Domestic fuel tanks and water tanks may encroach into the side and rear setback by 0.50 metres
- Heating and cooling equipment and other services may encroach into the side and rear setback by 0.50 metres



MC MULLEN NOLAN GROUP
31/574 Plummer Street,
Port Melbourne, VIC, 3207
Tel: (03) 7002 2200
Fax: (03) 7002 2299
www.mngsurvey.com.au
MNG Ref : 80004be-081b

SCALE
1:500



ORIGINAL SHEET
SIZE: A4

SHEET 8

VERSION B

