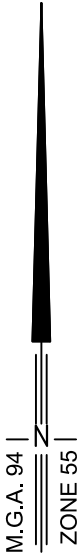
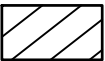
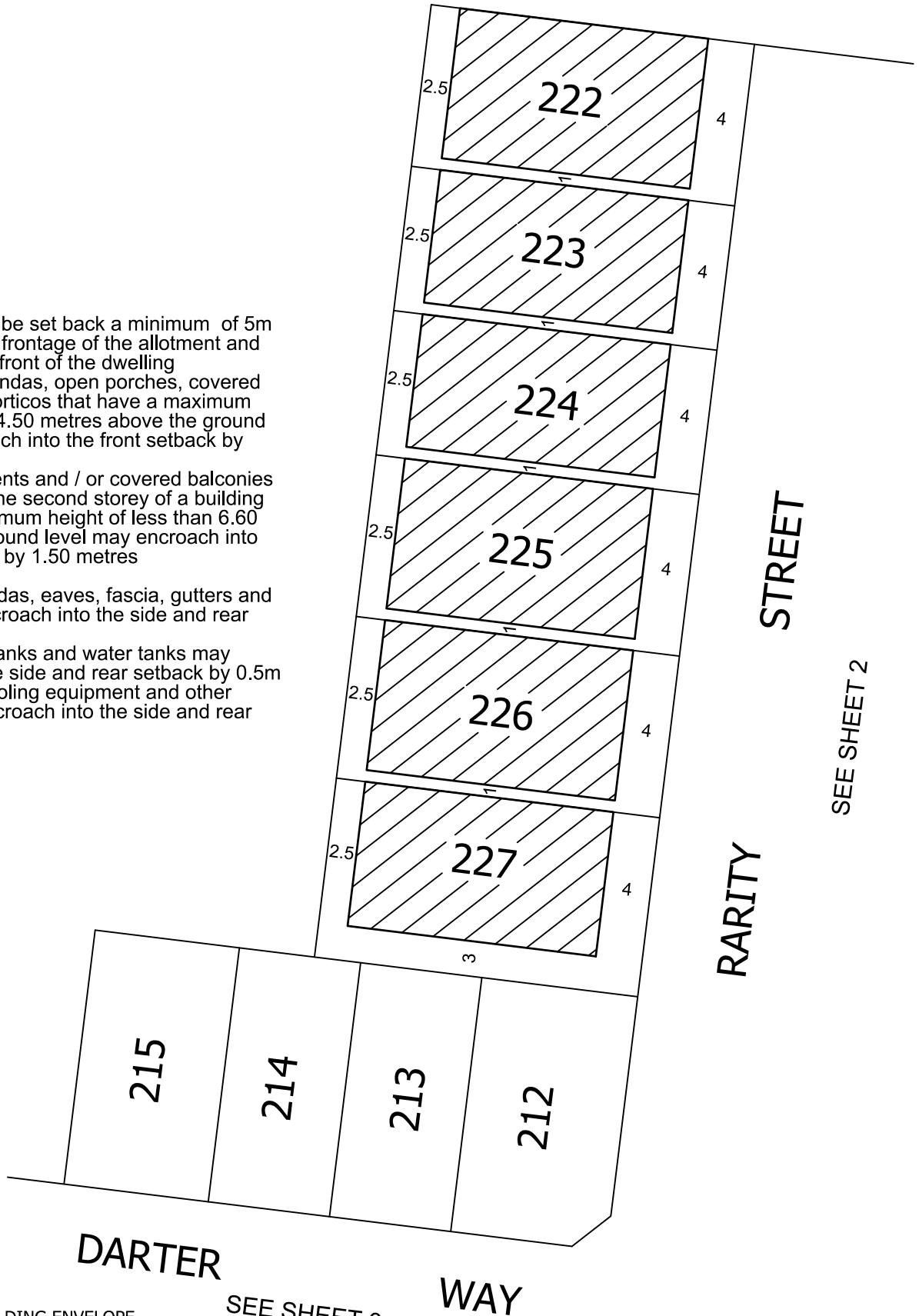


SCHEDULE 1

HARRIOTT AT ARMSTRONG CREEK BUILDING ENVELOPES



- Garages are to be set back a minimum of 5m from the primary frontage of the allotment and 0.5m behind the front of the dwelling
- Balconies, verandas, open porches, covered walkways and porticos that have a maximum height less than 4.50 metres above the ground level may encroach into the front setback by 1.50 metres
- Facade treatments and / or covered balconies or verandas on the second storey of a building that have a maximum height of less than 6.60 metres above ground level may encroach into the front setback by 1.50 metres
- Porches, verandas, eaves, fascia, gutters and screens may encroach into the side and rear setback by 0.5m
- Domestic fuel tanks and water tanks may encroach into the side and rear setback by 0.5m
- Heating and cooling equipment and other services may encroach into the side and rear setback by 0.5m



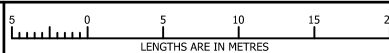
- BUILDING ENVELOPE

SEE SHEET 3



MC MULLEN NOLAN GROUP
31/574 Plummer Street,
Port Melbourne, VIC, 3207
Tel: (03) 7002 2200
Fax: (03) 7002 2299
www.mngsurvey.com.au
MNG Ref : 80004be-017k

SCALE
1:500



ORIGINAL SHEET
SIZE: A4

SHEET 1 OF 4

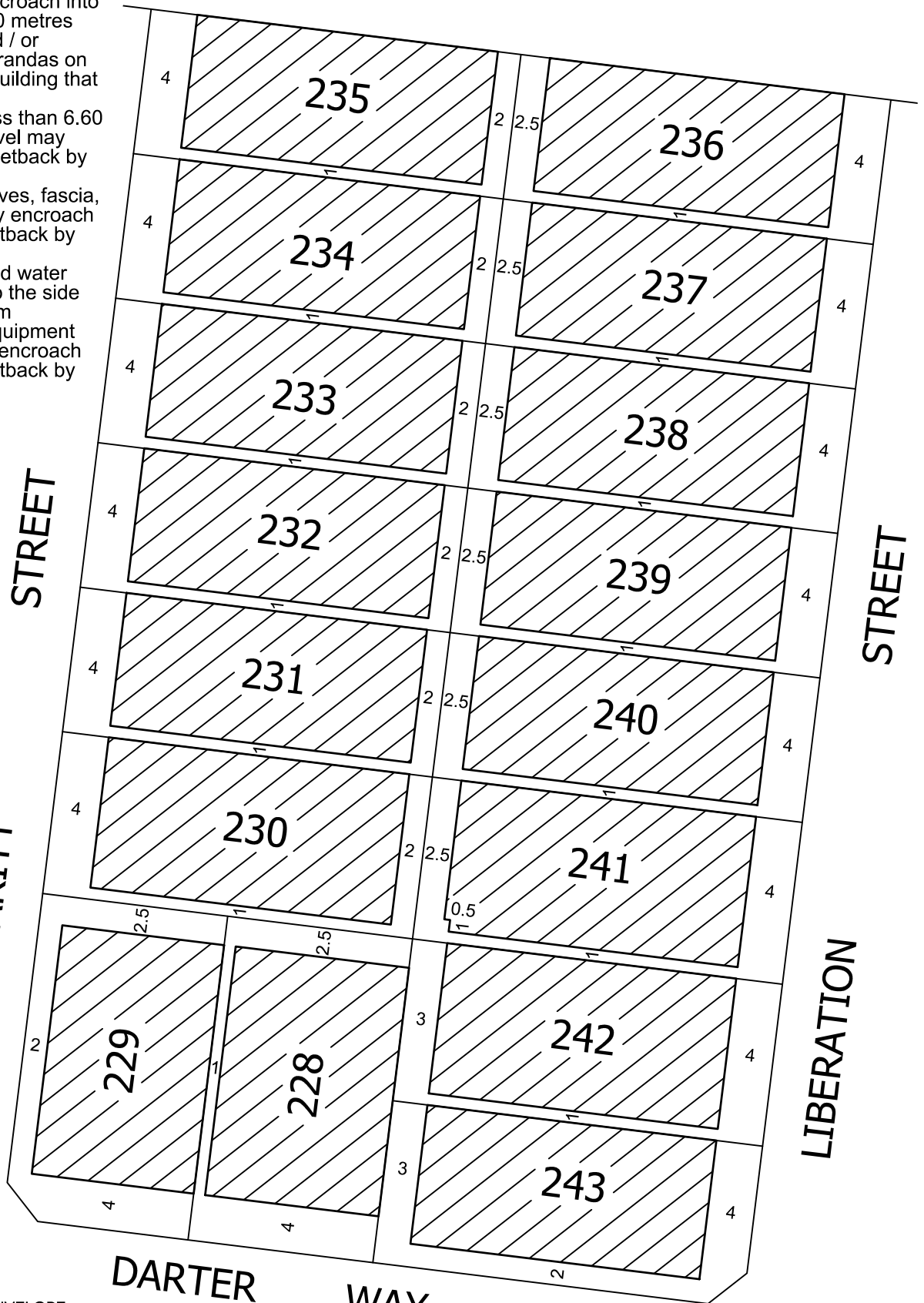
VERSION K



- Garages are to be set back a minimum of 5m from the primary frontage of the allotment and 0.5m behind the front of the dwelling
- Balconies, verandas, open porches, covered walkways and porticos that have a maximum height less than 4.50 metres above the ground level may encroach into the front setback by 1.50 metres
- Facade treatments and / or covered balconies or verandas on the second storey of a building that have a maximum height of less than 6.60 metres above ground level may encroach into the front setback by 1.50 metres
- Porches, verandas, eaves, fascia, gutters and screens may encroach into the side and rear setback by 0.5m
- Domestic fuel tanks and water tanks may encroach into the side and rear setback by 0.5m
- Heating and cooling equipment and other services may encroach into the side and rear setback by 0.5m

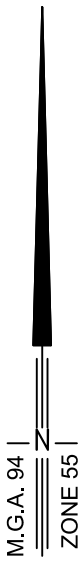
SCHEDULE 1

HARRIOTT AT ARMSTRONG CREEK BUILDING ENVELOPES



SEE SHEET 1

DARTER WAY
SEE SHEET 4



- BUILDING ENVELOPE



MC MULLEN NOLAN GROUP
31/574 Plummer Street,
Port Melbourne, VIC, 3207
Tel: (03) 7002 2200
Fax: (03) 7002 2299
www.mngsurvey.com.au
MNG Ref : 80004/be-017k

SCALE 1:500
LENGTHS ARE IN METRES

ORIGINAL SHEET SIZE: A4

SHEET 2

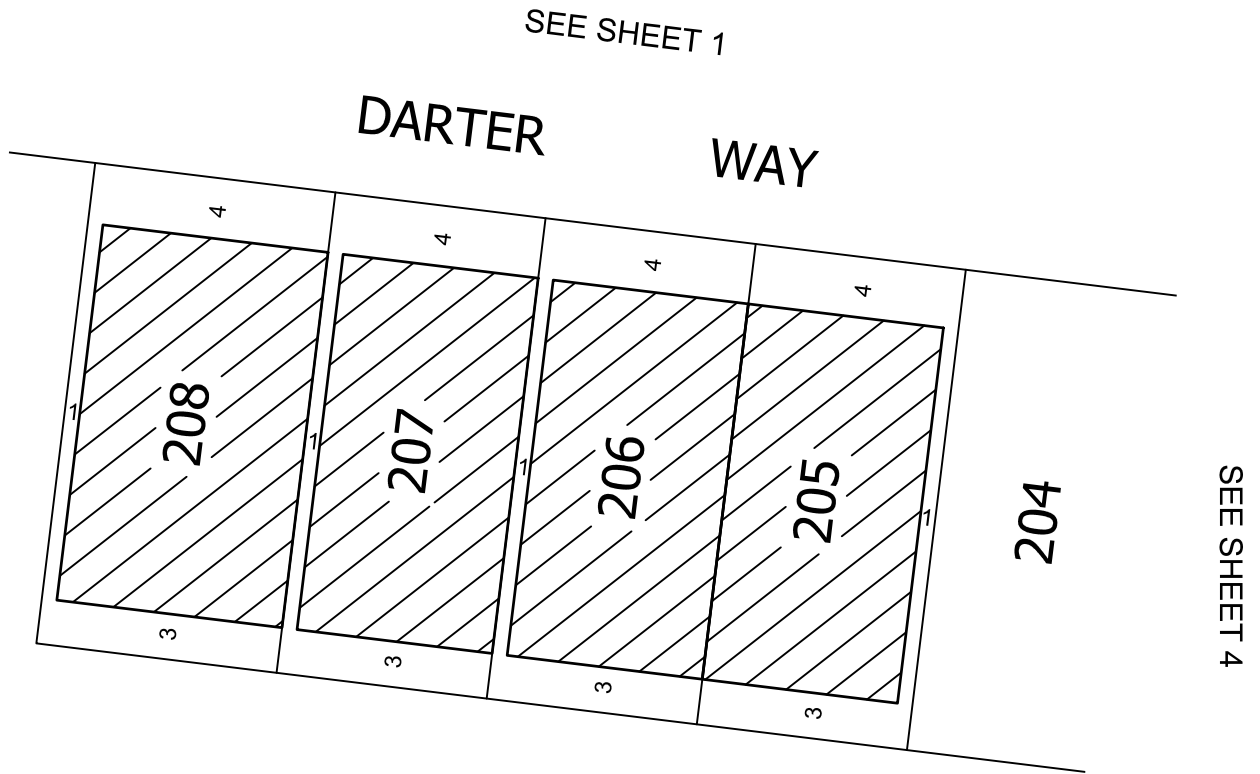
VERSION K



SCHEDULE 1

HARRIOTT AT ARMSTRONG CREEK BUILDING ENVELOPES

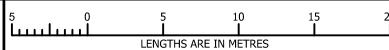
M.G.A. 94 |
ZONE 55 |



- Garages are to be set back a minimum of 5m from the primary frontage of the allotment and 0.5m behind the front of the dwelling
- Balconies, verandas, open porches, covered walkways and porticos that have a maximum height less than 4.50 metres above the ground level may encroach into the front setback by 1.50 metres
- Facade treatments and / or covered balconies or verandas on the second storey of a building that have a maximum height of less than 6.60 metres above ground level may encroach into the front setback by 1.50 metres
- Porches, verandas, eaves, fascia, gutters and screens may encroach into the side and rear setback by 0.5m
- Domestic fuel tanks and water tanks may encroach into the side and rear setback by 0.5m
- Heating and cooling equipment and other services may encroach into the side and rear setback by 0.5m

 - BUILDING ENVELOPE

SCALE
1:500



ORIGINAL SHEET
SIZE: A4

SHEET 3 OF 4



MC MULLEN NOLAN GROUP
31/574 Plummer Street,
Port Melbourne, VIC, 3207
Tel: (03) 7002 2200
Fax: (03) 7002 2299
www.mngsurvey.com.au
MNG Ref : 80004be-017k

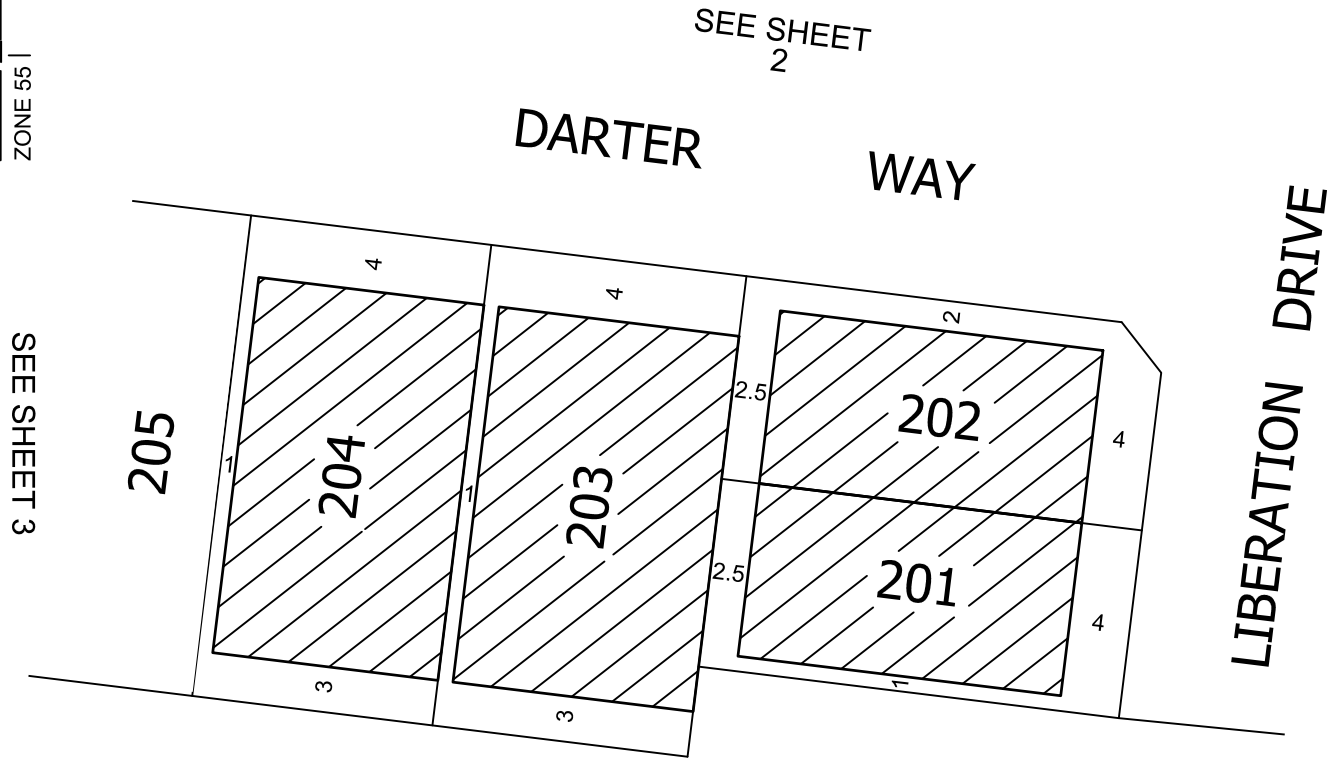
VERSION K


HARRIOTT
AT ARMSTRONG CREEK

SCHEDULE 1

HARRIOTT AT ARMSTRONG CREEK BUILDING ENVELOPES

M.G.A. 94 |
ZONE 55 |



- Garages are to be set back a minimum of 5m from the primary frontage of the allotment and 0.5m behind the front of the dwelling
- Balconies, verandas, open porches, covered walkways and porticos that have a maximum height less than 4.50 metres above the ground level may encroach into the front setback by 1.50 metres
- Facade treatments and / or covered balconies or verandas on the second storey of a building that have a maximum height of less than 6.60 metres above ground level may encroach into the front setback by 1.50 metres
- Porches, verandas, eaves, fascia, gutters and screens may encroach into the side and rear setback by 0.5m
- Domestic fuel tanks and water tanks may encroach into the side and rear setback by 0.5m
- Heating and cooling equipment and other services may encroach into the side and rear setback by 0.5m

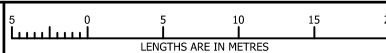


- BUILDING ENVELOPE



MC MULLEN NOLAN GROUP
31/574 Plummer Street,
Port Melbourne, VIC, 3207
Tel: (03) 7002 2200
Fax: (03) 7002 2299
www.mngsurvey.com.au
MNG Ref : 80004be-017k

SCALE
1:500



ORIGINAL SHEET
SIZE: A4

SHEET 4 OF 4

VERSION K


HARRIOTT
AT ARMSTRONG CREEK