

- BUILDING ENVELOPE

SCHEDULE 1

- Garages are to be set back a minimum of 5m from the primary frontage of the allotment and 0.5m behind the front of the dwelling

- Balconies, verandas, open porches, covered walkways and porticos that have a maximum height less than 4.50 metres above the ground level may encroach into the front setback by 1.50 metres

- Facade treatments and / or covered balconies or verandas on the second storey of a building that have a maximum height of less than 6.60 metres above ground level may encroach into the front setback by 1.50 metres

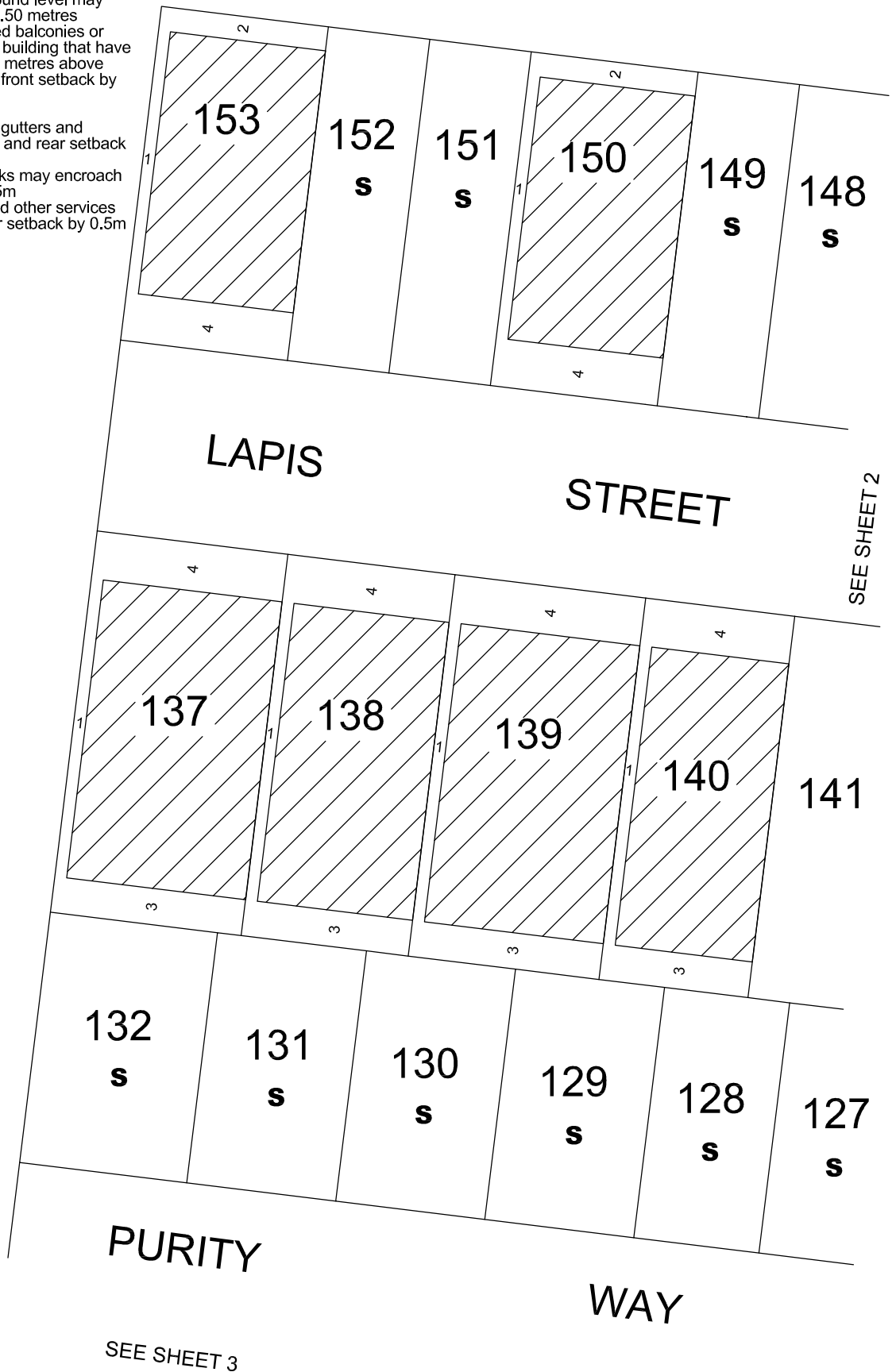
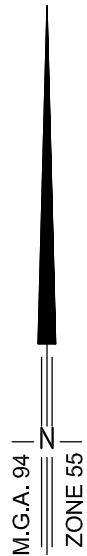
- Porches, verandas, eaves, fascia, gutters and screens may encroach into the side and rear setback by 0.5m

- Domestic fuel tanks and water tanks may encroach into the side and rear setback by 0.5m

- Heating and cooling equipment and other services may encroach into the side and rear setback by 0.5m

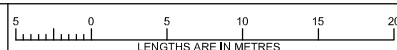
S - Small Lot Housing Code
(Type A)

HARRIOTT @ ARMSTRONG CREEK
STAGE 1
BUILDING ENVELOPES



MC MULLEN NOLAN GROUP
8/3a Wirraway Drive,
Port Melbourne, VIC, 3207
Tel: (03) 7002 2200
Fax: (03) 7002 2299
www.mngsurvey.com.au
MNG Ref : 80004BE-016h

SCALE
1:500

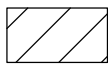


ORIGINAL SHEET
SIZE: A4

SHEET 1 OF 4

VERSION H

HARRIOTT
AT ARMSTRONG CREEK



- BUILDING ENVELOPE

SCHEDULE 1

HARRIOTT @ ARMSTRONG CREEK
STAGE 1
BUILDING ENVELOPES

S - Small Lot Housing Code
(Type A)

M.G.A. 94 |

ZONE 55 |

SEE SHEET 1

LAPIS

STREET

DRIVE

LIBERATION

PURITY

WAY

SEE SHEET 4

- Garages are to be set back a minimum of 5m from the primary frontage of the allotment and 0.5m behind the front of the dwelling
- Balconies, verandas, open porches, covered walkways and porticos that have a maximum height less than 4.50 metres above the ground level may encroach into the front setback by 1.50 metres
- Facade treatments and / or covered balconies or verandas on the second storey of a building that have a maximum height of less than 6.60 metres above ground level may encroach into the front setback by 1.50 metres
- Porches, verandas, eaves, fascia, gutters and screens may encroach into the side and rear setback by 0.5m
- Domestic fuel tanks and water tanks may encroach into the side and rear setback by 0.5m
- Heating and cooling equipment and other services may encroach into the side and rear setback by 0.5m



MC MULLEN NOLAN GROUP
8/34 Wirraway Drive,
Port Melbourne, VIC, 3207
Tel: (03) 7002 2200
Fax: (03) 7002 2299
www.mngsurvey.com.au
MNG Ref : 80004BE-016h

SCALE
1:500

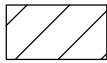


ORIGINAL SHEET
SIZE: A4

SHEET 2

VERSION H

HARRIOTT
AT ARMSTRONG CREEK



- BUILDING ENVELOPE

SCHEDULE 1

HARRIOTT @ ARMSTRONG CREEK
STAGE 1
BUILDING ENVELOPES

S - Small Lot Housing Code
(Type A)

- Garages are to be set back a minimum of 5m from the primary frontage of the allotment and 0.5m behind the front of the dwelling
- Balconies, verandas, open porches, covered walkways and porticos that have a maximum height less than 4.50 metres above the ground level may encroach into the front setback by 1.50 metres
- Facade treatments and / or covered balconies or verandas on the second storey of a building that have a maximum height of less than 6.60 metres above ground level may encroach into the front setback by 1.50 metres

- Porches, verandas, eaves, fascia, gutters and screens may encroach into the side and rear setback by 0.5m
- Domestic fuel tanks and water tanks may encroach into the side and rear setback by 0.5m
- Heating and cooling equipment and other services may encroach into the side and rear setback by 0.5m

SEE SHEET 1

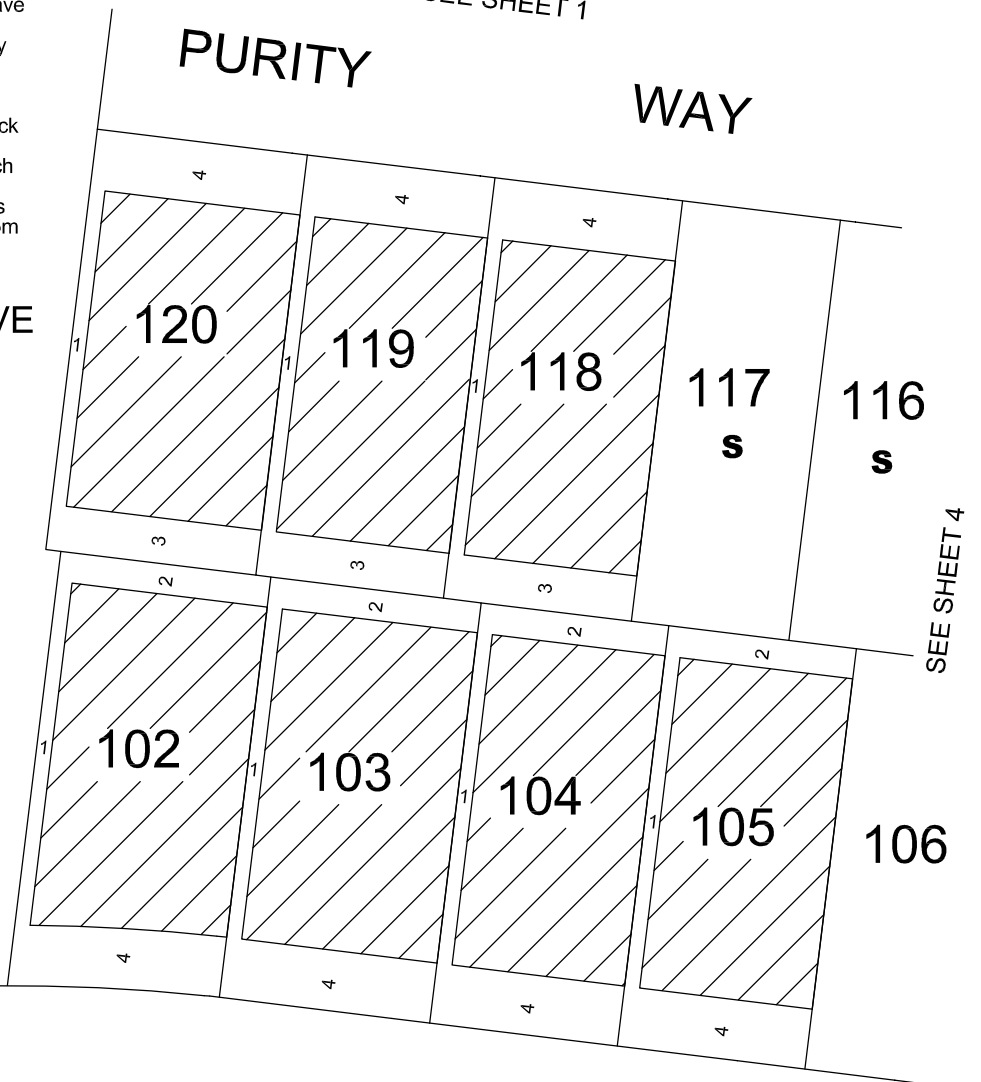
PURITY

WAY

RESERVE
No. 1

ROAD

M.G.A. 94 | ZONE 55 |



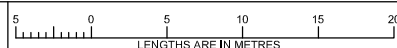
SEE SHEET 4

HARKNESS

BOULEVARD

HARRIOTT

SCALE
1:500



ORIGINAL SHEET
SIZE: A4

SHEET 3

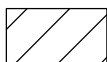


MC MULLEN NOLAN GROUP
8/34 Wirraway Drive,
Port Melbourne, VIC, 3207
Tel: (03) 7002 2200
Fax: (03) 7002 2299
www.mngsurvey.com.au
MNG Ref : 80004BE-016h

VERSION H

HARRIOTT
AT ARMSTRONG CREEK

M.G.A. 94 |
ZONE 55 |



- BUILDING ENVELOPE

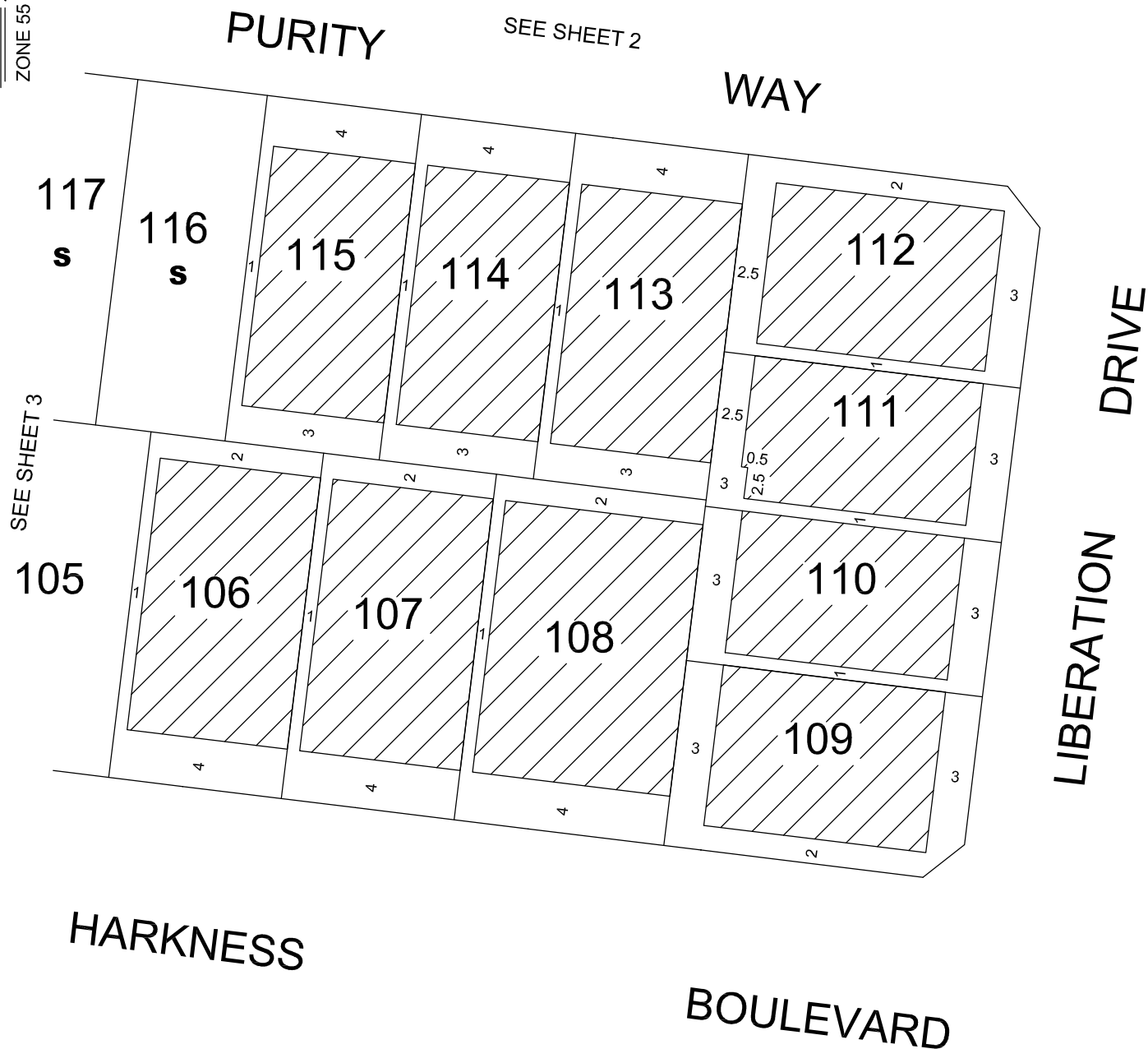
- Garages are to be set back a minimum of 5m from the primary frontage of the allotment and 0.5m behind the front of the dwelling
- Balconies, verandas, open porches, covered walkways and porticos that have a maximum height less than 4.50 metres above the ground level may encroach into the front setback by 1.50 metres
- Facade treatments and / or covered balconies or verandas on the second storey of a building that have a maximum height of less than 6.60 metres above ground level may encroach into the front setback by 1.50 metres

- Porches, verandas, eaves, fascia, gutters and screens may encroach into the side and rear setback by 0.5m
- Domestic fuel tanks and water tanks may encroach into the side and rear setback by 0.5m
- Heating and cooling equipment and other services may encroach into the side and rear setback by 0.5m

SCHEDULE 1

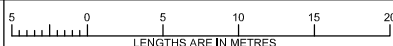
HARRIOTT @ ARMSTRONG CREEK
STAGE 1
BUILDING ENVELOPES

S - Small Lot Housing Code
(Type A)



MC MULLEN NOLAN GROUP
8/34 Wirraway Drive,
Port Melbourne, VIC, 3207
Tel: (03) 7002 2200
Fax: (03) 7002 2299
www.mngsurvey.com.au
MNG Ref : 80004BE-016h

SCALE
1:500



ORIGINAL SHEET
SIZE: A4

SHEET 4

VERSION H

HARRIOTT
AT ARMSTRONG CREEK